

PLEASE CHECK WWW.MOLEX.COM FOR LATEST PART INFORMATION

Part Number: **0504208000**
Status: **Active**
Description: OBD-II Crimp Terminal, Female, 50420, 4.00mm (.157") Pitch

Documents:

[Drawing \(PDF\)](#) [RoHS Certificate of Compliance \(PDF\)](#)
[Product Specification PS-51115-001 \(PDF\)](#)

General

Product Family Crimp Terminals
 Series 50420
 Crimp Quality Equipment Yes
 Product Name OBD-II

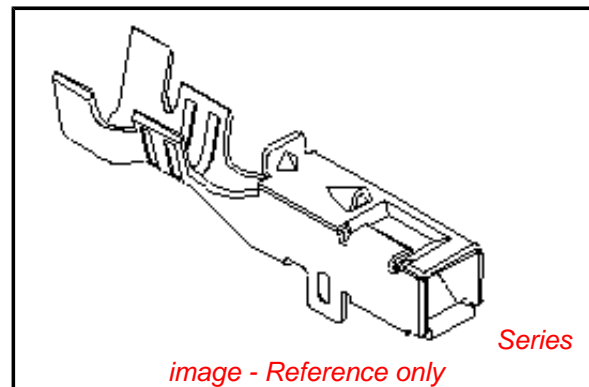
Physical

Gender Female
 Material - Metal Phosphor Bronze
 Material - Plating Mating Tin
 Material - Plating Termination Tin
 Packaging Type Reel
 Termination Interface: Style Crimp or Compression
 Wire Insulation Diameter 1.60-2.30mm (.024-.091")
 Wire Size AWG N/A
 Wire Size mm² AVS 0.30 TO 0.85, AVS 0.30F TO 0.75F, AVSS 0.50 TO 0.85, AVSS 0.50F TO 0.75F, CAVS 0.50 TO 0.85

Material Info

Reference - Drawing Numbers

Product Specification PS-51115-001
 Sales Drawing SD-50420-8*00



EU RoHS

ELV and RoHS Compliant
REACH SVHC
Contains SVHC: No
Halogen-Free Status

China RoHS



Need more information on product environmental compliance?

Email productcompliance@molex.com
 For a multiple part number RoHS Certificate of Compliance, [click here](#)

Please visit the [Contact Us](#) section for any non-product compliance questions.

Search Parts in this Series

50420Series

Use With

51115 , 51116

Application Tooling | FAQ

Tooling specifications and manuals are found by selecting the products below. Crimp Height Specifications are then contained in the Application Tooling Specification document.

Global

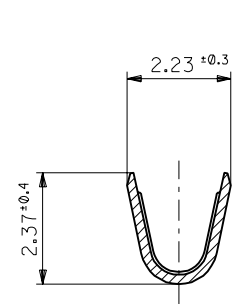
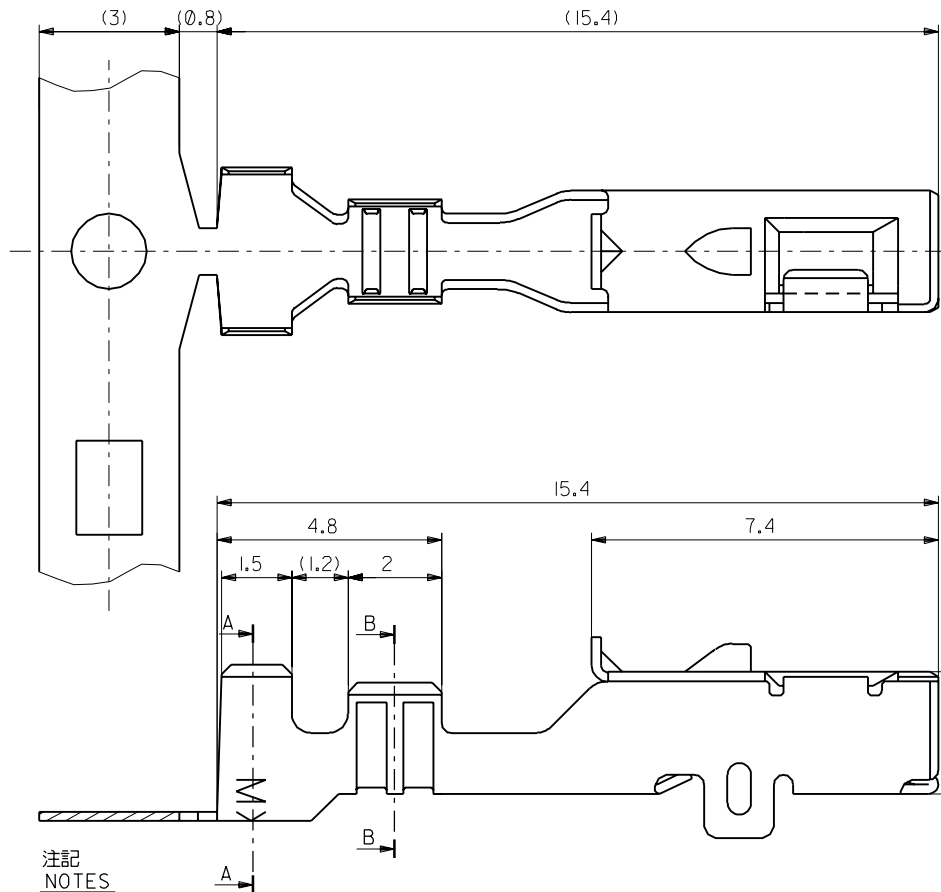
Description	Product #
Fine Adjust™ Applicator for OBD II 4.00mm (.157") Wire-to-Wire Crimp Terminal, 0.30-0.85mm ² and 18-22 AWG	0639009700
Extraction Tool	0011030043
Hand Crimp Tool	0638119500

Japan

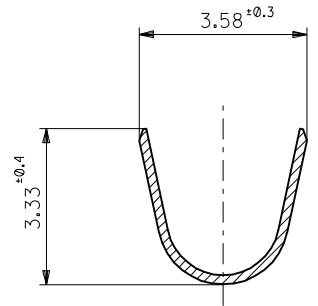
Description	Product #
Applicator for M211A Bench Press, 18-22 AWG, for 50420 Crimp Terminal	<u>0573263000</u>

This document was generated on 03/15/2010

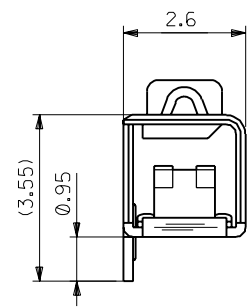
PLEASE CHECK WWW.MOLEX.COM FOR LATEST PART INFORMATION



SECT. B-B



SECT. A-A



注記
NOTES

- 適合ハウジング: 51115-1601, 51116-1601
APPLICABLE HOUSING: 51115-1601, 51116-1601
- 材料: リン青銅、錫メッキ材 (t = 0.2)
MATERIAL: PRE-TINNED PHOSPHOR BRONZE (t = 0.2)
- 適用電線: APPLICABLE WIRE RANGE
AVS-0.3, AVS-0.3f, AVS-0.5, AVS-0.5f, AVSS-0.5
AVSS-0.5f, CAVS-0.5, AVS-0.75f, AVSS-0.75f
AVS-0.85, AVSS-0.85, CAVS-0.85

角度 ANGLE	±3°				
30以上 OVER	+0.3				
10以上 30未満 UNDER	+0.25	A	変更 (J450187)	K.F.	94/6/30
10未満 UNDER	+0.2	0	新規作成 (J45066)	M.S.	94/3/2
一般公差 GENERAL TOLERANCES		記号 LTR	変更内容 REVISION RECORD	DR. CHK.	日付 DATE

材料 MATERIAL	注記2 参照 SEE NOTE 2
仕上げ FINISH	—#—
適用電線範囲 WIRE RANGE	注記3 参照 SEE NOTE 3
被覆外径 INS. RANGE	Ø1.6-2.3
DRAWN BY	94/3/3 K.FURUYAMA
CHK'D BY	94/6/30 M.SANO M.SAKANO
APP'D BY	94/6/30 M.ENOMOTO
尺度 SCALE	10 : 1

50420-8100	バラ状 LOOSE
50420-8000	連鎖状 CHAIN
ENG. NO.	端子形状 FORM
MOLEX-JAPAN CO., LTD. 日本モレックス株式会社	
REVISE ONLY ON CAD SYSTEM	
TITLE 名称 4.0 WIRE TO WIRE CRIMP RECEPTACLE (SAE J1962 DIAGNOSTIC CONNECTOR)	
DWG. NO.	REV
SD-50420-8*00	A